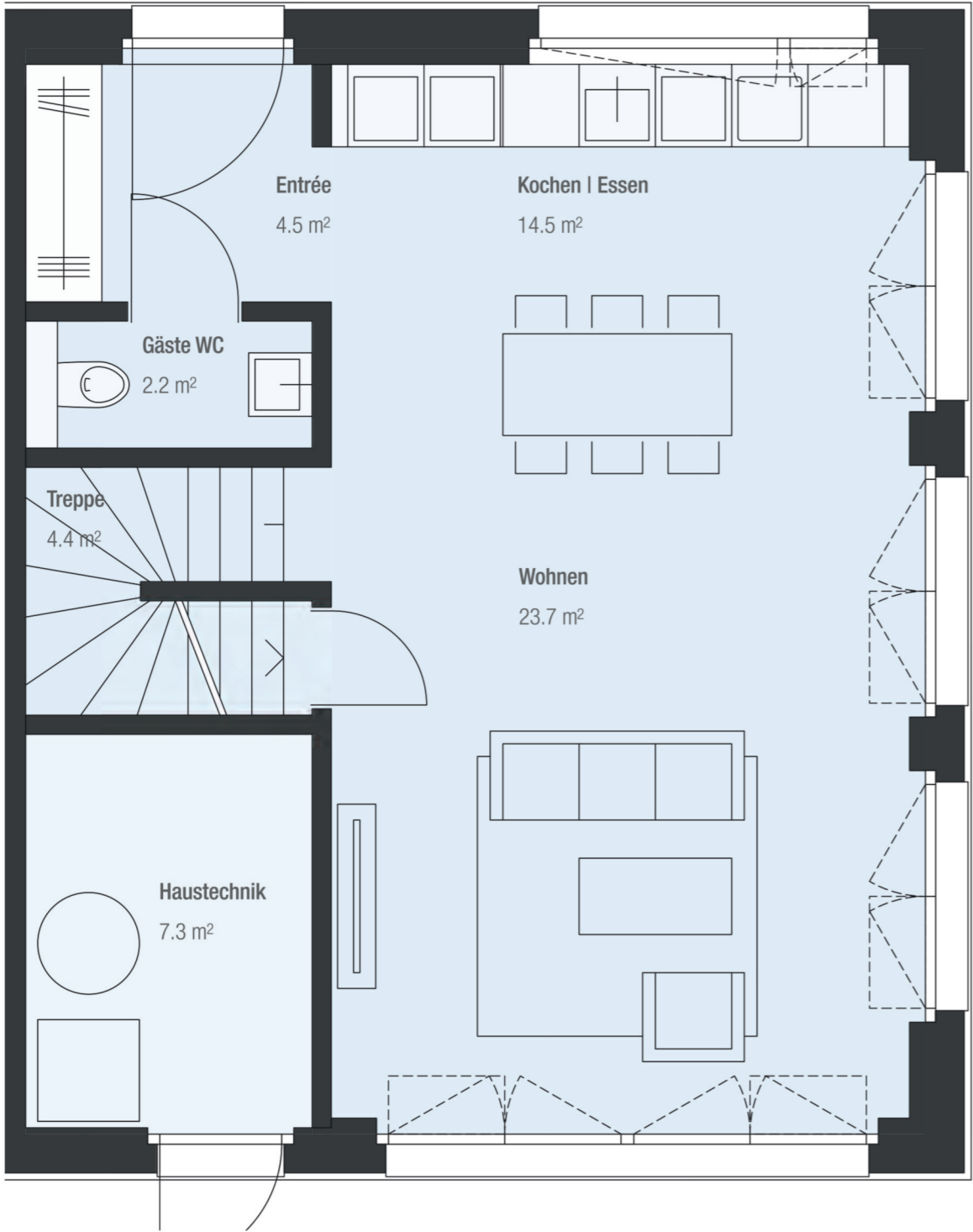
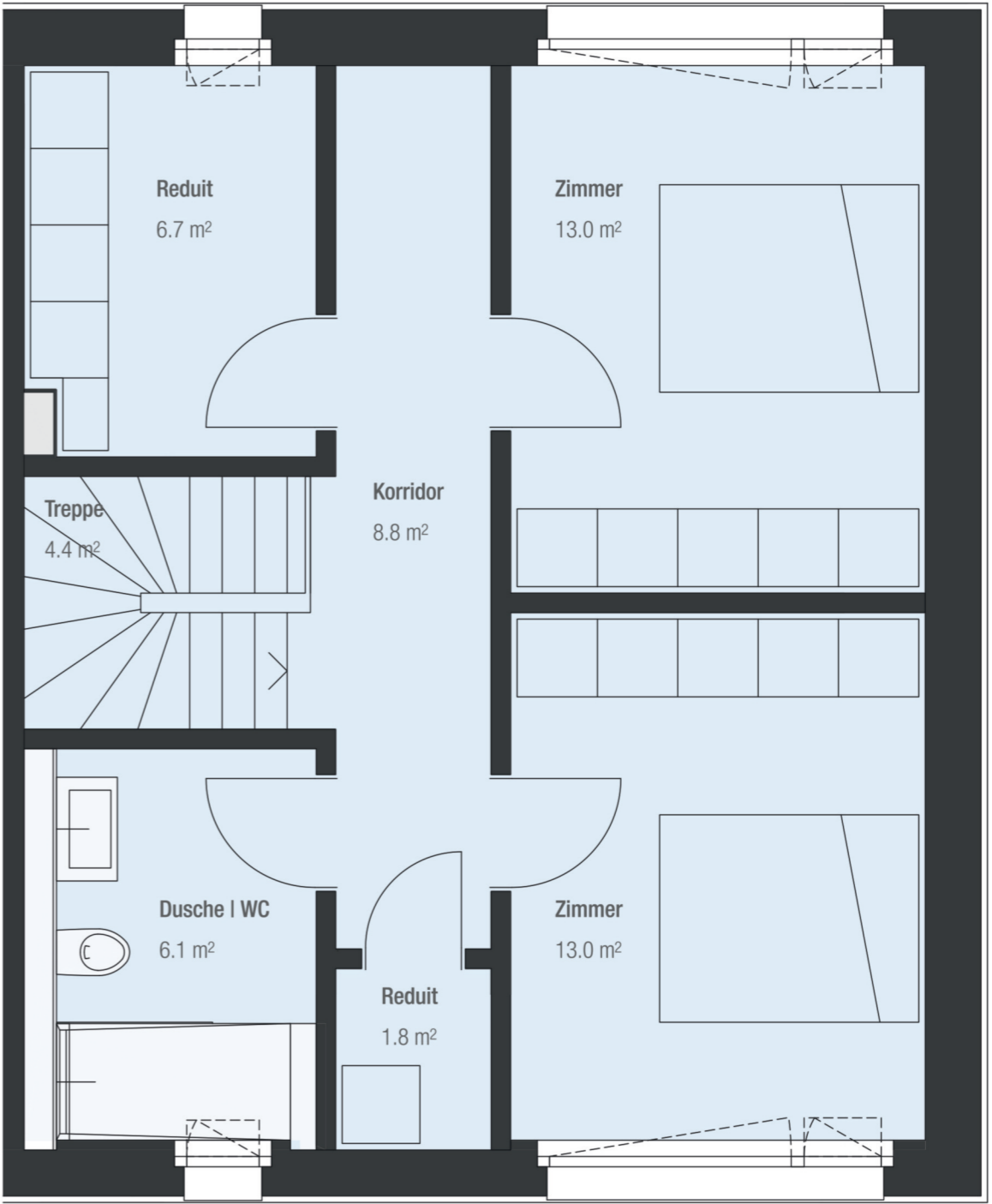


HAUSTEIL B | 3.5-ZIMMER

Brutto-Wohnfläche 109.0 m<sup>2</sup>  
Schopf | Zugang | Sitzplatz | Rasen 153.5 m<sup>2</sup>



Hausteil B | Grundriss Erdgeschoss | M 1:50



Hausteil B | Grundriss Obergeschoss | M 1:50



3m



